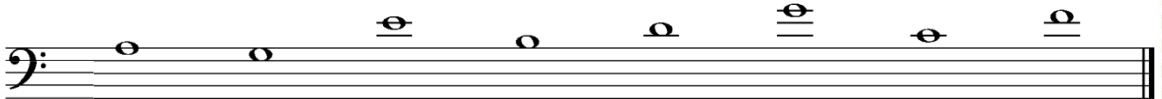
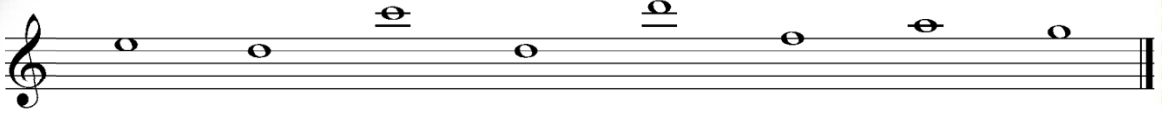


Treble & Bass Pitch

Name the following notes.

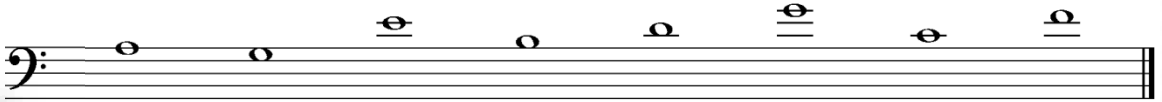
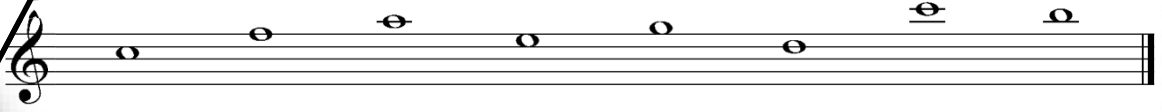


Now draw the following notes

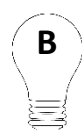
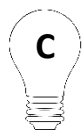
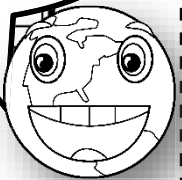


Treble & Bass Pitch

Name the following notes.



Now draw the following notes



Treble & Bass Pitch

ANSWERS

Name the following notes.



Musical staff with treble clef and notes: C, F, A, E, G, D, C, B.

Musical staff with treble clef and notes: E, D, C, D, D, F, A, G.

Musical staff with bass clef and notes: A, G, E, B, D, G, C, F.



Musical staff with bass clef and notes: A, E, C, D, E, C, B, F.

Now draw the following notes



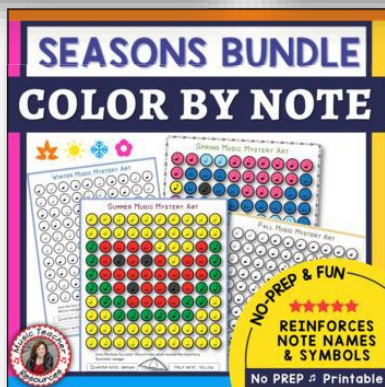
Musical staff with treble clef and lightbulb icons containing notes: C, F, D, B, G, C, A, E.

Musical staff with bass clef and lightbulb icons containing notes: A, E, G, B, D, F, C, G.



Do your students need more practice identifying pitch? You may be interested in the following products.

Check out these resources by **CLICKING** on the image below, or visit my store **HERE**.



To preview and wish list more **EARTH DAY** products

Click Here



[CLICK](#) on Dizzy and he'll show you **MORE** music education resources!



- Kim Maloney,
- **MusicTeacherResources**

JOIN THE MTR FREE RESOURCE LIBRARY

JOIN THE MTR MEMBERSHIP

[SIGN UP](#) and become a member of the **MTR Email Club** to gain exclusive access to **FREEBIES!**

[CHECKOUT](#) the **MTR Membership**



TERMS OF USE / COPYRIGHT

By purchasing and/or downloading this electronic file, you agree to the terms of use stated below. For **personal** and **single-classroom use only**. If you are a traveling teacher and have more than one classroom, you may use it for each of your classrooms. No part of this file may be posted online, copied, or sold without the direct permission of the author. Violations are subject to penalties. If you would like to share this resource with friends, go back to [Teachers Pay Teachers](#) and purchase additional licenses.

CLIP ART & FONTS

STAY CONNECTED

